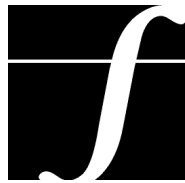


TREE REMOVAL INVENTORY

2570-2590 Argyle Road
Mississauga, Ontario



Ferris + Associates Inc.
Landscape Architecture and Urban Design

July 23, 2019

UPDATED September 3, 2020
For Revised Site Plan

Arborist Report for Development Applications

Municipal Address of Property:
2570-2590 Argyle Road
Mississauga, Ontario

Section 1 - Arborist Report

Name of Consulting Arborist:

Paul Ferris

T. 416.366.6800

Ferris + Associates Inc. 11 Church Street, Suite 302, Toronto, Ontario M5E 1W1

Date of Inspection: June 24, 2019

| Tree No. & Tag No. | Tree Species | DBH (cm) * | Crown Diameter (m) | Plant Condition ** Health & Structure Elements | Observations & Comments | Direction |
|---------------------------|--|---------------|--------------------|--|---|-----------|
| Subject Site Trees | | | | | | |
| 1 | Siberian elm <i>Ulmus pumila</i> | 47.5, 49.5 | 12 | Poor | Trunk section with slim flux (oozing); crown with min. deadwood; broken branch ends present; epicormic shoots present. | RETAIN |
| 2 | Norway spruce <i>Picea abies</i> | 45 | 9 | Fair | Straight trunk form; defined trunk flare; thinning crown; generally balanced crown. | RETAIN |
| 3 | Siberian elm <i>Ulmus pumila</i> | 40.5 | 9 | Poor | Tree close to building; surface roots present; cut stump shows indicates larger section of twin stemmed tree removed; crown with epicormic shoots; poor form crown. | RETAIN |
| 4 | Siberian elm <i>Ulmus pumila</i> | 81 | 14 | Poor to fair | Tree located very close to tree #5; large tree with white-faced scar; crown pruned with epicormic shoots present. | RETAIN |
| 5 | Honey locust <i>Gleditsia triacanthos</i> | 48 | 9 | Poor | Trunk burl formations; large thorns in trunk section up to approx. 3m; defined root flare; poor crown form. | RETAIN |
| 6 | Douglas fir <i>Pseudotsuga menziesii</i> | 23.5 | 3 | Very poor | Trunk with lean; very low live crown volume (LCV); thinning crown; significant crown raising. | RETAIN |
| 7 | Douglas fir <i>Pseudotsuga menziesii</i> | 32 | 3 | Poor | Trunk with lean; low live crown volume (LCV); thinning crown; significant crown raising | RETAIN |
| 8 | Douglas fir <i>Pseudotsuga menziesii</i> | 28.5 | 3 | Poor | Trunk with lean; very low live crown volume (LCV); thinning crown; significant crown raising. | RETAIN |

| Tree No. & Tag No. | Tree Species | DBH (cm) * | Crown Diameter (m) | Plant Condition ** Health & Structure Elements | Observations & Comments | Direction |
|--------------------|--|--------------------|--------------------|--|---|----------------------|
| 9 | Douglas fir <i>Pseudotsuga menziesii</i> | 30.5 | 3 | Poor | Trunk with lean; low live crown volume (LCV); thinning crown; significant <i>crown raising</i> | RETAIN |
| 10 | Douglas fir <i>Pseudotsuga menziesii</i> | 34.5 | 4 | Poor | Straight trunk form; basal scar; low live crown ratio (LCR); thinning crown. | RETAIN |
| 11 | Colorado blue spruce <i>Picea pungens</i> | 34.5 | 3 | Fair | Narrow crowned tree; balanced and dense form; lower crown with some <i>deadwood</i> . | RETAIN |
| 12 | Colorado blue spruce <i>Picea pungens</i> | 32 | 4 | Fair | Straight trunk form; lower crown pruned; balanced crown form. | RETAIN |
| 13 | Colorado blue spruce <i>Picea pungens</i> | 34.5 | 5 | Fair | Straight trunk form; lower crown pruned; some <i>deadwood</i> present; balanced crown form | RETAIN |
| 14 | Colorado blue spruce <i>Picea pungens</i> | 29.5 | 4 | Poor to fair | Straight trunk form; lower crown pruned; some <i>deadwood</i> present. | RETAIN |
| 15 | Colorado blue spruce <i>Picea pungens</i> | 43 | 5 | Poor | Straight trunk form; lower crown pruned; some <i>deadwood</i> present; poor crown form – asymmetrical form. | RETAIN |
| 16 | Colorado blue spruce <i>Picea pungens</i> | 26 | 3 | Poor | Straight trunk form; lower crown pruned; some <i>deadwood</i> present; poor crown form – asymmetrical form. | RETAIN |
| 17 | Colorado blue spruce <i>Picea pungens</i> | 30.5 | 4 | Poor | Straight trunk form; lower crown pruned; some <i>deadwood</i> present; poor crown form – asymmetrical form. | RETAIN |
| 18 | Siberian elm <i>Ulmus pumila</i> | 19.5, 20.5 | 8 | Very poor | Trunk lean; tree located beside tree that was removed leaving stump cut at ground level; very poor formed crown – asymmetrical form; poor trunk forms. | RETAIN |
| 19 | Siberian elm <i>Ulmus pumila</i> | 44 | 10 | Poor | Crowns shows signs of Dec 2013 ice storm damage – <i>deadwood</i> , broken branch ends, and extensive epicormic shoots. | RETAIN |
| 20 | Siberian elm <i>Ulmus pumila</i> | 55.5 | 12 | Poor | Tree with lean and is positioned close to building; 2 cuts stumps present close to tree; trunk divides at 2.5m into 2 upright stems; epicormic shoots present; poor crown form – asymmetrical form. | REMOVED |
| 21 | Siberian elm <i>Ulmus pumila</i> | 56.6 | 10 | Poor | Trunk with lean; crowns shows signs of Dec 2013 ice storm damage – <i>deadwood</i> , broken branch ends, and extensive epicormic shoots. | RETAIN |
| 22 | Siberian elm <i>Ulmus pumila</i> | 30.5, 50, 51 | 12 | Extremely poor | Large basal scar with rot site on S side; trunk divides at 1.3m into 3 stems. | REMOVE (development) |
| 23 | American elm <i>Ulmus americana</i> | 20.5 | 5 | Extremely poor | Suppressed tree; extremely poor crown form; crown pruned. | RETAIN |

| Tree No. & Tag No. | Tree Species | DBH (cm) * | Crown Diameter (m) | Plant Condition ** Health & Structure Elements | Observations & Comments | Direction |
|--------------------|--|-----------------|--------------------|--|---|----------------------|
| 24 | Norway maple | 19 | 5 | Poor | Suppressed tree; extremely poor crown form; crown pruned. | RETAIN |
| 25 | Austrian Pine <i>Pinus nigra</i> | 38 | 8 | Poor to fair | Straight trunk form; poor crown form – asymmetrical form; possible incipient stage of Diplodia Tip Blight (DTB); crown pruned. | REMOVE (development) |
| 26 | American elm <i>Ulmus americana</i> | 43.5 | 10 | Fair | Trunk slight lean to E; poor crown form – adjacent trees removed that competed with tree 26; slight soil raising around tree. | REMOVE (development) |
| 27 | Siberian elm <i>Ulmus pumila</i> | 30 est. | 7 | Fair | Tree beside gabion retaining wall; possible <i>included bark</i> at co-dominant stems at 5m; min. <i>deadwood</i> present. | RETAIN |
| 28 | Manitoba maple <i>Acer negundo</i> | 10, 25, 30 est. | 6 | Poor | Poor trunk and crown forms; some <i>deadwood</i> present; diverging trunk stems. | REMOVE (development) |
| 29 | Siberian elm <i>Ulmus pumila</i> | 40 est. | 12 | Poor | Trunk with lean; thinning crown; <i>deadwood</i> present; poor crown form. | REMOVE (development) |
| 30 Tag 1403 | Siberian elm <i>Ulmus pumila</i> | 29.5 | 8 | Very poor | Trunk with lean; very poor crown form; crown shows signs of Dec 2013 ice storm damage – <i>deadwood</i> , broken branch ends, and extensive epicormic shoots. | REMOVE (development) |
| 31 Tag 1404 | Siberian elm <i>Ulmus pumila</i> | 23.5, 23 | 6 | Very poor | Trunk with lean; very poor crown form; crown shows signs of Dec 2013 ice storm damage – <i>deadwood</i> , broken branch ends, and extensive epicormic shoots. | REMOVE (development) |
| 32 Tag 1405 | Siberian elm <i>Ulmus pumila</i> | 31.5 | 8 | Very poor | Trunk with lean; very poor crown form; crown shows signs of Dec 2013 ice storm damage – <i>deadwood</i> , broken branch ends, and extensive epicormic shoots. | REMOVE (development) |
| 33 | Basswood <i>Tilia americana</i> | 20, 25 est. | 7 | Fair to good | Good formed tree viewed from east side of creek; balanced crown; trunk appears normal with no major defects. | RETAIN |
| 34 | Siberian elm <i>Ulmus pumila</i> | 30 est. | 8 | Poor to fair | Trunk with no major defects; broken branch ends present; balanced crown but with thinning condition. | RETAIN |
| 35 Tag 1408 | Siberian elm <i>Ulmus pumila</i> | 30 est., 40.5 | 12 | Poor | Poor formed crown and trunk; <i>deadwood</i> present; crown with epicormic shoots 2 stems cut beside tree. | REMOVE (development) |
| 36 Tag 1413 | Bur oak <i>Quercus macrocarpa</i> | 56, 58 | 14 | Fair | Two-stemmed tree with one upper trunk branch broken off resulting in an imbalanced upper crown form; min. <i>deadwood</i> ; epicormic shoots present. | RETAIN |

| Tree No. & Tag No. | Tree Species | DBH (cm) * | Crown Diameter (m) | Plant Condition ** Health & Structure Elements | Observations & Comments | Direction |
|--------------------|---------------------------------------|---------------|--------------------|--|--|-----------|
| 37 | Siberian elm <i>Ulmus pumila</i> | 60 est. | 10 | Poor | Tree located along Top of Slope (ToS) – slope covered with asphalt; large lower trunk with loose bark; some <i>deadwood</i> present; epicormic shoots present; balanced crown. | RETAIN |
| 38 | Siberian elm <i>Ulmus pumila</i> | 30, 30 est. | 10 | Poor | Tree located along ToS – slope covered with asphalt; some <i>deadwood</i> present; epicormic shoots present; poor crown form. | RETAIN |
| 39 | Siberian elm <i>Ulmus pumila</i> | 30 est. | 9 | Very poor | Tree located along ToS; – slope covered with asphalt; some <i>deadwood</i> present; epicormic shoots present; poor crown form. | RETAIN |
| 40 | Siberian elm <i>Ulmus pumila</i> | 25 est. | 8 | Very poor | Tree located along ToS; – slope covered with asphalt; some <i>deadwood</i> present; epicormic shoots present; poor crown form. | RETAIN |
| 41 | Siberian elm <i>Ulmus pumila</i> | 15, 30 est. | 8 | Very poor | Tree located along ToS; – slope covered with asphalt; some <i>deadwood</i> present; epicormic shoots present; very poor crown form; suppressed tree. | RETAIN |
| 42 | Siberian elm <i>Ulmus pumila</i> | 35 est. | 8 | Poor | Tree located along ToS; – slope covered with asphalt; some <i>deadwood</i> present; epicormic shoots present; poor crown form. | RETAIN |
| 43 | Siberian elm <i>Ulmus pumila</i> | 20, 30 est. | 8 | Very poor | Tree located along ToS; – slope covered with asphalt; some <i>deadwood</i> present; epicormic shoots present; very poor crown form; suppressed tree. | RETAIN |
| 44 | Siberian elm <i>Ulmus pumila</i> | 25 est. | 7 | Poor | Trunk with slime flux ooze; some <i>deadwood</i> present; epicormic shoots present; poor crown form. | RETAIN |
| 45 | Siberian elm <i>Ulmus pumila</i> | 23 | 6 | Poor | Tree located along Lower part of Slope (LoS); – slope covered with asphalt; Trunk with slime flux oozing; trunk with lean; poor crown form; crown pruned. | RETAIN |
| 46 | Siberian elm <i>Ulmus pumila</i> | 30 est. | 7 | Poor to fair | ; – slope covered with asphalt; some <i>deadwood</i> present; epicormic shoots present; poor crown form. | RETAIN |
| 47 | Manitoba maple <i>Acer negundo</i> | 35 est. | 8 | Extremely poor | Trunk with lean over property and adjacent property upper parking structure; extremely poor crown form -asymmetrical form. | RETAIN |
| 48 | Siberian elm <i>Ulmus pumila</i> | 25 est. | 8 | Poor | Trunk with slime flux oozing; broken branch ends; <i>deadwood</i> present. | RETAIN |
| 49 | Siberian elm <i>Ulmus pumila</i> | 23, 25.5 | 7 | Poor | Tree located along mid-slope section; poor formed crown with epicormic shoots. | RETAIN |
| 50 | Siberian elm <i>Ulmus pumila</i> | 35 est. | 7 | Very poor | Tree located along ToS; very poor crown form; trunk growing into upper rail of metal fence. | RETAIN |

| Tree No. & Tag No. | Tree Species | DBH (cm) * | Crown Diameter (m) | Plant Condition ** Health & Structure Elements | Observations & Comments | Direction |
|--------------------|-------------------------------------|-----------------|--------------------|--|--|----------------------|
| 51 | Siberian elm <i>Ulmus pumila</i> | 50 est. | 10 | Extremely poor | Low live crown volume; high <i>deadwood</i> percentage in crown. | RETAIN |
| 52 | Siberian elm <i>Ulmus pumila</i> | 10, 25, 30 est. | 10 | Very poor | Tree located along ToS; very poor crown form; low live crown volume; <i>deadwood</i> present; | RETAIN |
| 53 | Siberian elm <i>Ulmus pumila</i> | 92 | 16 | Poor | Tree located between parking spots; crown with <i>deadwood</i> ; crown with epicormic shoots and with a low live crown volume. | REMOVE (development) |
| 54 | Siberian elm <i>Ulmus pumila</i> | 86.5 | 12 | Very poor | Tree located adjacent parking spot; trunk flare with large white-faced scar; 3 large trunk stems at 2-3m with slime flux ooze; low live crown volume; <i>deadwood</i> present. | REMOVE (development) |
| 55 | Siberian elm <i>Ulmus pumila</i> | 35 est. | 8 | Fair | Tree located along ToS; – slope covered with asphalt; crown with epicormic shoots and some <i>deadwood</i> ; | RETAIN |
| 56 | White mulberry <i>Morus alba</i> | 35 est. | 9 | Fair | Tree located along ToS; – slope covered with asphalt; tree competing with adjacent small tree; min. <i>deadwood</i> present. | RETAIN |
| 57 | Siberian elm <i>Ulmus pumila</i> | 15, 30 est. | 8 | Poor | Trunk embedded in top rail of metal fence; some <i>deadwood</i> present. | RETAIN |
| 58 | Siberian elm <i>Ulmus pumila</i> | 29.5, 30.5 | 8 | Fair | Tree located along Lower part of Slope (LoS); crown with some <i>deadwood</i> and epicormic shoots. | RETAIN |
| 59 | Siberian elm <i>Ulmus pumila</i> | 35 est. | 8 | Very poor | Trunk section embedded in top rail of metal fence; crown with epicormic shoots and some <i>deadwood</i> . | RETAIN |
| 60 | Siberian elm <i>Ulmus pumila</i> | 55.5 | 13 | Poor | Tree located near building; trunk with slime flux ooze; surface roots present; defined trunk flare; basal rot site; crown with epicormic shoots. | REMOVE (development) |
| 61 | Siberian elm <i>Ulmus pumila</i> | 76 | 14 | Poor | Trunk with sweep form; tree competing with adjacent tree; poor crown form; crown with epicormic shoots and some <i>deadwood</i> ; crown pruned. | RETAIN |
| 62 | Siberian elm <i>Ulmus pumila</i> | 69.5 | 15 | Poor | Trunk with sweep form; tree competing with adjacent tree; poor crown form; crown with epicormic shoots and some <i>deadwood</i> ; crown pruned. | RETAIN |
| 63 | Siberian elm <i>Ulmus pumila</i> | 18.5, 31 | 7 | Poor | Surface roots present; suppressed tree; poor crown form; crown with epicormic shoots. | RETAIN |
| 64 | Siberian elm <i>Ulmus pumila</i> | 36 | 8 | Very poor | Low live crown volume; crown pruned with <i>deadwood</i> present; poor crown form. | RETAIN |
| 65 | Siberian elm <i>Ulmus pumila</i> | 89.5 | 19 | Very poor | Large branch rot site, poor crown form with epicormic shoots and <i>deadwood</i> . | RETAIN |

| Tree No. & Tag No. | Tree Species | DBH (cm) * | Crown Diameter (m) | Plant Condition ** Health & Structure Elements | Observations & Comments | Direction |
|--------------------|---|---------------|--------------------|--|--|-----------|
| 66 | Siberian elm <i>Ulmus pumila</i> | 35.5 | 8 | Very poor | Trunk with lean; poor formed crown with epicormic shoots and <i>deadwood</i> . | RETAIN |
| 67 | Siberian elm <i>Ulmus pumila</i> | 70 | 12 | Poor | Trunk with lean; poor formed crown with epicormic shoots and <i>deadwood</i> . | RETAIN |
| 68 | Siberian elm <i>Ulmus pumila</i> | 67 | 12 | Very poor | Trunk with lean and sweep form condition; crowns shows signs of Dec 2013 ice storm damage – <i>deadwood</i> , broken branch ends, and extensive epicormic shoots. | RETAIN |
| 69 | Siberian elm <i>Ulmus pumila</i> | 77 | 13 | Very poor | Trunk with heavy lean; large branch pruned out of crown; crowns shows signs of Dec 2013 ice storm damage – <i>deadwood</i> , broken branch ends, and extensive epicormic shoots. | RETAIN |
| 70 | Juniper sp. <i>Juniperus sp.</i> | 25 | 4 | Poor | Poor crown form – competing with adjacent tree; vines growing over upper crown section. | RETAIN |
| 71 | Siberian elm <i>Ulmus pumila</i> | 75 est. | 12 | Poor | Crown shows signs of Dec 2013 ice storm damage – <i>deadwood</i> , broken branch ends, and extensive epicormic shoots. | RETAIN |
| 72 | Colorado spruce <i>Picea pungens</i> | 34 | 3.5 | Fair | Trunk with normal form; balanced crown condition; min. <i>deadwood</i> present. | RETAIN |
| 73 | Siberian elm <i>Ulmus pumila</i> | 67.5 | 15 | Poor to fair | Defined trunk flare; crown shows signs of Dec 2013 ice storm damage – <i>deadwood</i> , broken branch ends, and extensive epicormic shoots. | RETAIN |
| 74 | Siberian elm <i>Ulmus pumila</i> | 37.5, 41 | 14 | Poor to fair | Defined trunk flare; crown with epicormic shoots and some <i>deadwood</i> ; trunk with slime flux ooze at 1.3m tree adjacent entrance driveway. | RETAIN |
| 75 | Siberian elm <i>Ulmus pumila</i> | 56.5 | 13 | Poor | Defined trunk flare; surface roots present; tree close to entrance driveway; ice storm damaged signs - <i>deadwood</i> , broken branch ends, and extensive epicormic shoots. | RETAIN |
| 76 | Siberian elm <i>Ulmus pumila</i> | 31 | 8 | Poor | Tree located near building; surface roots present; poor crown form; epicormic shoots present. | RETAIN |
| 77 | Norway maple <i>Acer platanoides</i> | 49.5 | 10 | Poor to fair | Trunk divides into 2 stems at 1.7m; poor crown form – competing with adjacent tree 78; crown pruned; branch stub with hole. | RETAIN |
| 78 | Norway maple <i>Acer platanoides</i> | 46.5 | 8 | Poor to fair | Trunk with lean – competing with tree 77; thinning crown condition; surface roots present; some bark damage from tree removal company that removed a tree very close to tree 78; branch stub with hole used by squirrel. | RETAIN |

| Tree No. & Tag No. | Tree Species | DBH (cm) * | Crown Diameter (m) | Plant Condition ** Health & Structure Elements | Observations & Comments | Direction |
|--------------------|-------------------------------------|---------------|--------------------|--|--|-----------------------------|
| 79 | Siberian elm <i>Ulmus pumila</i> | 68.5 | 15 | Poor | Trunk divides at 2.3m into 2 trunk stems; ice storm damaged signs - <i>deadwood</i> , broken branch ends, and extensive epicormic shoots. | RETAIN |
| 80 | Siberian elm <i>Ulmus pumila</i> | 37.5, 49.5 | 16 | Poor | Poor trunk and crown forms; ice storm damaged signs - <i>deadwood</i> , broken branch ends, and extensive epicormic shoots. | RETAIN |
| 81 | Ash sp. <i>Fraxinus sp.</i> | 35.5 | 7 | Poor to fair | Poor crown form; crown pruned; crown with top <i>dieback</i> ; no sign of EAB. | RETAIN |
| 82 | Siberian elm <i>Ulmus pumila</i> | 32, 49 | 13 | Poor | Surface roots present; crown with epicormic shoots and broken branch ends; larger stem divides at 2.5m into 2 upright stems. | RETAIN |
| 83 | Siberian elm <i>Ulmus pumila</i> | 80.5 | 20 | Poor | Surface roots present with rot site; ice storm damaged signs - <i>deadwood</i> , broken branch ends, and extensive epicormic shoots. | REMOVE (development) |
| 84 | Siberian elm <i>Ulmus pumila</i> | 76 | 14 | Poor | Large surface root present; tree located in playground area; crown pruned but still shows signs of ice storm damage - <i>deadwood</i> , broken branch ends, and extensive epicormic shoots; generally balanced crown form. | REMOVE (development) |

*Diameter at Breast Height measured at 1.4m above ground level.

** Plant Condition rating is determined based on International Society of Arboriculture (I.S.A.) protocol.

I verify that the information provided above is true, accurate and has been provided to the best of my ability.

Paul D. Ferris

Name of Certified/Registered Consulting Arborist or Registered Professional Forester



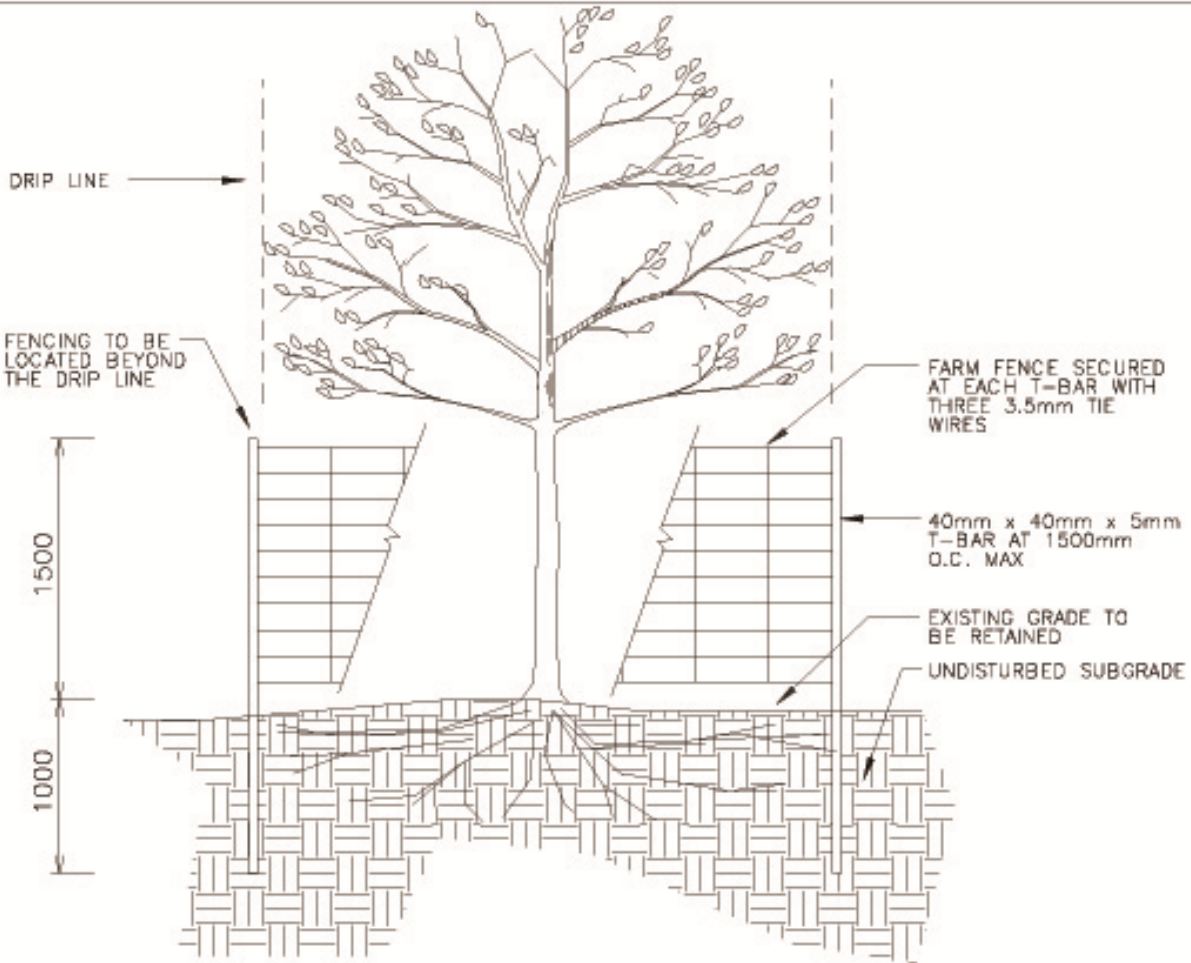
Signature of Certified/Registered Consulting Arborist or Registered Professional Forester

July 23, 2019

Date

Section 2 – Declaration

Not Applicable



NOTES:

1. THE AREA WITHIN THE DRIPLINE OF ALL EXISTING TREES SHALL BE PROPERLY PROTECTED WITH FENCING AS DETAILED.
2. THE AREA WITHIN THE PROTECTED FENCING SHALL REMAIN UNDISTURBED AND SHALL NOT BE USED FOR THE STORAGE OF MATERIALS, EQUIPMENT OR VEHICLES.
3. PRUNE BRANCHES TO REMOVE DAMAGED LIMBS. DO NOT DAMAGE LEADERS. ALL CUTS OVER 25mm SHALL BE TREATED IN ACCORDANCE WITH APPROPRIATE HORTICULTURAL PRACTICES AS APPROVED BY THE COMMUNITY SERVICES DEPARTMENT.
4. CUTTING OF ROOTS OR CHANGING OF GRADES AROUND EXISTING TREES TO BE PRESERVED WILL NOT BE PERMITTED WITHOUT THE APPROVAL OF THE COMMUNITY SERVICES DEPARTMENT.
5. IF TREES ARE BEING ADVERSLY AFFECTED BY CONSTRUCTION, A WATERING AND FERTILIZING PROGRAM IS TO BE SET UP TO THE SATISFACTION OF THE COMMUNITY SERVICES DEPARTMENT.
6. TREE PROTECTION FENCING MAY BE REQUIRED AROUND INDIVIDUAL TREES TO REMAIN AND/OR AROUND TREE PRESERVATION ZONES AS IDENTIFIED ON THE APPROVED TREE PRESERVATION PLANS.
7. TREES IDENTIFIED FOR PRESERVATION BUT WHICH DIE, OR ARE DAMAGED BEYOND REPAIR, SHALL BE REPLACED AT THE DEVELOPERS' EXPENSE WITH A SIZE AND SPECIES OF TREE APPROVED BY THE COMMUNITY SERVICES DEPARTMENT.
8. ALL DIMENSIONS ARE IN MILLIMETERS UNLESS OTHERWISE NOTED.

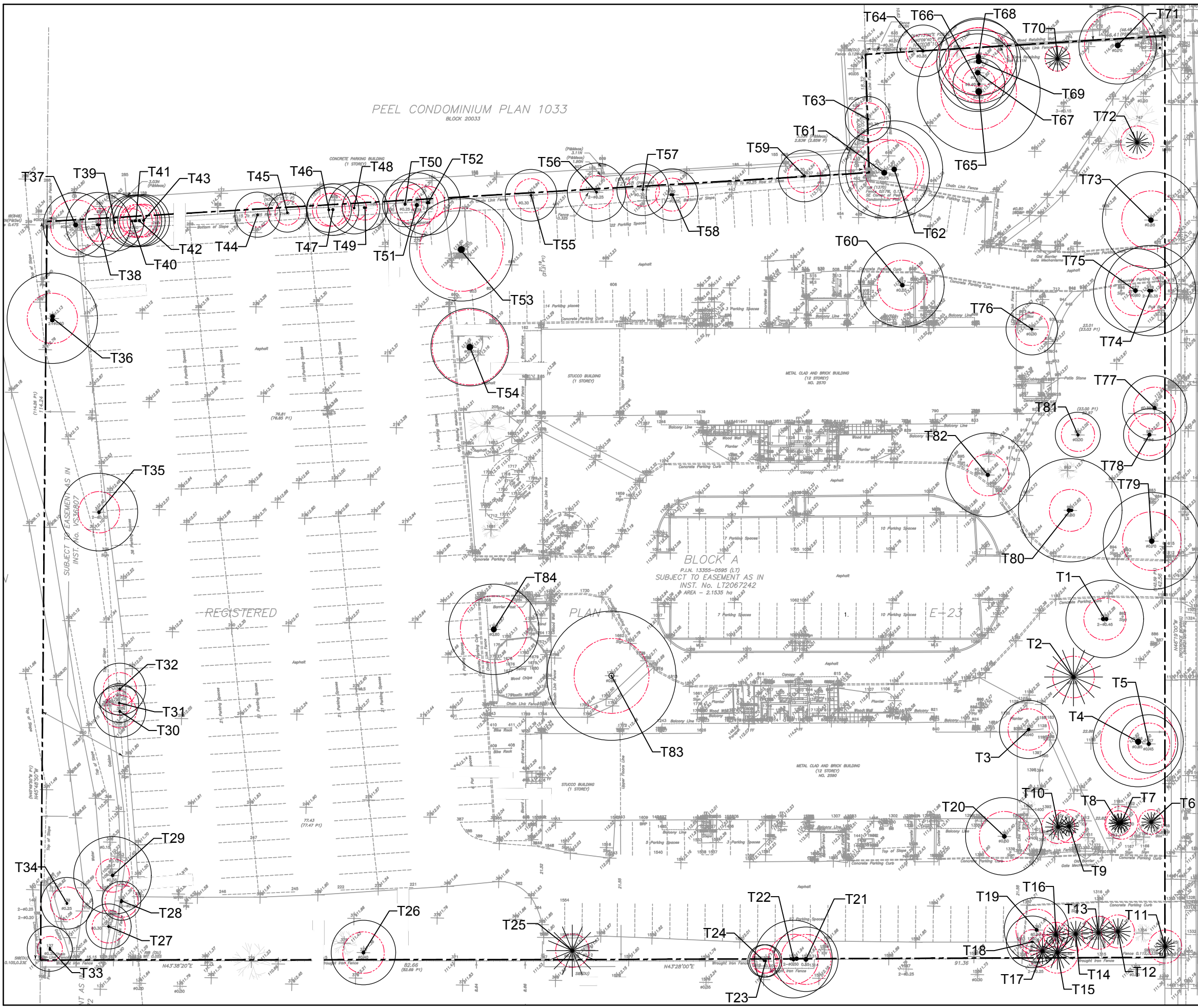
| NO. | REVISION | DATE |
|-----|----------|------|
| | | |



SCALE: N.T.S.
 DATE: 1 MARCH 2002
 DRAWN BY: P & D
 NUMBER: 02950-8

TREE PRESERVATION HOARDING

...:\treepres\rev01\tr021.dwg 2802/05/27 09:12:48 PM COMMUNITY SERVICES PLOT From ...c:\tools\p3\tdrv\printer.plt

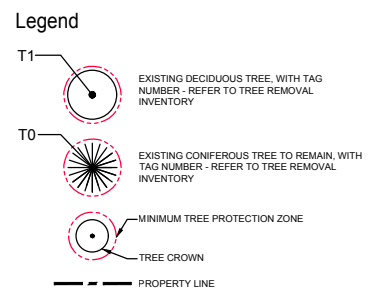


- Notes**
- All existing trees which are to remain shall be fully protected with hoarding erected beyond the drip line to the satisfaction of the planning and building department prior to the issuance of the building permit. Groups of trees and other existing vegetation to be protected with hoarding around the entire area. Areas within the protective fencing shall remain undisturbed and shall not be used for the storage of building materials or equipment.
 - No rigging cables shall be wrapped around or installed in the trees and surplus soil, equipment, debris or material shall not be placed over the root systems of the trees within the protective fencing. No contaminants will be dumped or flushed where feeder roots of trees exist.
 - The developer or agents shall take every precaution necessary to prevent damage to the vegetation to be retained.
 - Where limbs or portions of trees are removed to accommodate construction, they will be removed in accordance with accepted arboricultural practice.
 - Where root systems of protected trees adjacent to construction are exposed or damaged they shall be neatly trimmed and the area backfilled with appropriate material to prevent desiccation.
 - Where necessary, vegetation will be given an overall pruning to restore the balance between roots and top growth, or to restore its appearance.
 - Trees that have died or have been damaged beyond repair shall be removed and replaced with a species approved by the Planning and Building Department.
 - If grades around trees to be protected are to change, the owner shall be required to take precautions such as dry welling, retaining wall, and root feeding to the satisfaction of the Planning and Building Department.

Notes

BASE INFORMATION PROVIDED BY:
SPEIGHT, VAN NOSTRAND & GIBSON LIMITED
ONTARIO LAND SURVEYORS

BASED ON:
PLAN OF SURVEY WITH TOPOGRAPHY OF
LOT 1
REGISTERED PLAN 775
CITY OF MISSISSAUGA
FORMER MUNICIPALITY OF PEEL



TREE LOCATIONS HAVE BEEN LOCATED
IN FIELD AND ARE APPROXIMATE

| | | |
|---|------------|--|
| 1. | JUN. XX-19 | Issued for Tree Removal Inventory |
| No. | Date: | Revision |
| This drawing is to be used for the following purpose: | | Not to be used for construction unless signed by the Landscape Architect |

Ferris + Associates Inc.
Landscape Architecture and Urban Design
11 Church Street
Suite 302
Toronto, Ontario
M5E 1W1
Telephone 416 366 6800
www.ferrisassociatesinc.com

Client: **Ranee Management**

Project: **2570-2590 Argyle Road**

Mississauga, Ontario
Drawing Title: **Existing Tree Survey Plan**

Date Plotted: JUNE 2019
Scale: 1:600
Drawn: AD
Checked: PF
Project No: 2594
Drawing No: **TS-1**

